

LED Display Modules

Catalog Numbers 2711P-RDK15C, 2711P-RDT15C, 2711P-RDB15C, 2711P-RDT15AG, 2711P-RDK12C, 2711P-RDK12CK, 2711P-RDT12C, 2711P-RDT12CK, 2711P-RDT12AG, 2711P-RDB12C, 2711P-RDB12CK, 2711P-RDT10C, 2711P-RDB10C, 2711P-RDK10C, 2711P-RDT10CM, 2711P-RDB10CM, 2711P-RDT7C, 2711P-RDB7C, 2711P-RDK7C, 2711P-RDT7CM, 2711P-RDB7CM, 2711P-RDT7CK, 2711P-RDB7CK, 2711P-RDK7CK

Topic	Page
Summary of Changes	2
About the Product	2
Replace the Display Module	3
Upgrade the Firmware	3
Firmware Upgrade Wizard	4
Upgrade the Terminal Firmware from a Storage Device	4
Additional Resources	12

Summary of Changes

This publication contains new and updated information as indicated in the following table.

Topic	Page
Added catalog numbers for 7-inch and 10-inch displays to the front cover.	Front cover
Added information for 7-inch and 10-inch displays to the About the Product section.	2

About the Product

Display modules with a light-emitting diode (LED) backlight are used by the PanelView™ Plus 6 and PanelView Plus 700 to 1500 platforms. Earlier displays have a cold-cathode fluorescent lamp (CCFL) backlight.

IMPORTANT If you replace a 7-inch, 10-inch, 12-inch, or 15-inch CCFL display with an LED display, you must upgrade the terminal firmware for the device to operate correctly.

A firmware upgrade is not required for configured terminals that include a display module and logic module. The upgrade is required only when ordering an LED display module to replace an existing CCFL display module.

Each display module has a catalog number and a series letter. The series letter differentiates an LED-backlit display from a CCFL-backlit display. You can find the series letter on the back of the display. See the table to identify the type of display you have.

Display Size	Cat. Nos.	LED Series Displays	CCFL Series Displays
15-inch	2711P-RDK15C, 2711P-RDT15C, 2711P-RDB15C, 2711P-RDT15AG	Series C	Series B or earlier
12-inch	2711P-RDK12C, 2711P-RDK12CK, 2711P-RDT12C, 2711P-RDT12CK, 2711P-RDT12AG, 2711P-RDB12C, 2711P-RDB12CK	Series D	Series C or earlier
10-inch	2711P-RDT10C, 2711P-RDB10C, 2711P-RDK10C, 2711P-RDT10CM, 2711P-RDB10CM	Series C	Series B or earlier
7-inch	2711P-RDT7C, 2711P-RDB7C, 2711P-RDK7C, 2711P-RDT7CM, 2711P-RDB7CM, 2711P-RDT7CK, 2711P-RDB7CK, 2711P-RDK7CK	Series D Series E: • 2711P-RDB7C • 2711P-RDB7CM • 2711P-RDB7CK	Series C or earlier Series D or earlier: • 2711P-RDB7C • 2711P-RDB7CM • 2711P-RDB7CK

Replace the Display Module

To replace a display module, see the appropriate manual [Additional Resources on page 12](#).

IMPORTANT Before mounting the LED series display module, make sure that the logic module firmware is at the firmware revision that is listed in the table in Upgrade the Firmware.

You must use CCFL series display module to upgrade the firmware; the display must be for 700 to 1500 platforms.

If no other display is available, the complete terminal must be returned to your local Allen-Bradley distributor for exchange or repair.


Upgrade the Firmware

To locate the firmware upgrade for your terminal, follow these steps.

1. Go to <http://www.rockwellautomation.com/support/pcdc.page>.
2. Click the Get Downloads tab.
3. Click Find Product Downloads.
4. From the All Families pull-down menu, choose PanelView Plus 6 700 - 1500 or PanelView Plus 700 - 1500.
5. Click the family selection, then choose a firmware revision from the list.

The table shows the firmware revision that is required for your terminal.

For This PanelView Plus Family	Choose This Firmware Revision
PanelView Plus/PanelView Plus CE 700 to 1500	5.10.11 or later
PanelView Plus 6 700 to 1500	7.00.20130619 or later

6. Click Find Downloads at the bottom of the Selections tab.
7. Under Downloads, click the show downloads  icon to access the firmware.
8. Download the upgrade file (.exe) to a temporary folder on the same drive as FactoryTalk® View Machine Edition (ME) software.
9. Run the upgrade file (.exe) installation procedure:
 - The FUW is installed in the FactoryTalk View ME folder.
 - The firmware upgrade package (.fup) file is installed into the folder that is specified during the installation procedure.

You are now ready to run the FUW to upgrade the terminal firmware from a storage device or by using a network connection.

Firmware Upgrade Wizard

The firmware upgrade Wizard (FUW) is used to upgrade the terminal firmware. Two methods are provided to upgrade the firmware:

- Create a firmware upgrade card with the contents of the FUP file that you can then load in the terminal to upgrade the firmware.

The firmware upgrade card can be a USB flash drive, CompactFlash (CF) card, or a Secure Digital (SD) card, catalog number 1784-SDx.

- Upgrade firmware in a terminal that is connected to a computer over a direct network connection. The network connection requires a computer with RSLinx® Enterprise software installed.

RSLinx Enterprise software is required so you can choose the terminal to upgrade.

IMPORTANT Use the latest version of RSLinx Enterprise software, which is available at https://rockwellautomation.custhelp.com/app/answers/detail/a_id/49190.

You can run the FUW from within FactoryTalk View Studio software or from the Programs menu on your computer:

- In FactoryTalk View Studio software, from the Tools menu, choose firmware upgrade Wizard.
- Choose Start>Programs>Rockwell Software>FactoryTalk View>Tools>ME firmware upgrade Wizard.

Upgrade the Terminal Firmware from a Storage Device

Upgrade the firmware from a storage device is a two-step process. First, you create a firmware upgrade card with the required firmware files. Second, you load the card in the target terminal to upgrade the firmware.

The firmware upgrade card can be a USB flash drive, CF card, or an SD card.

Create a Firmware Upgrade Card

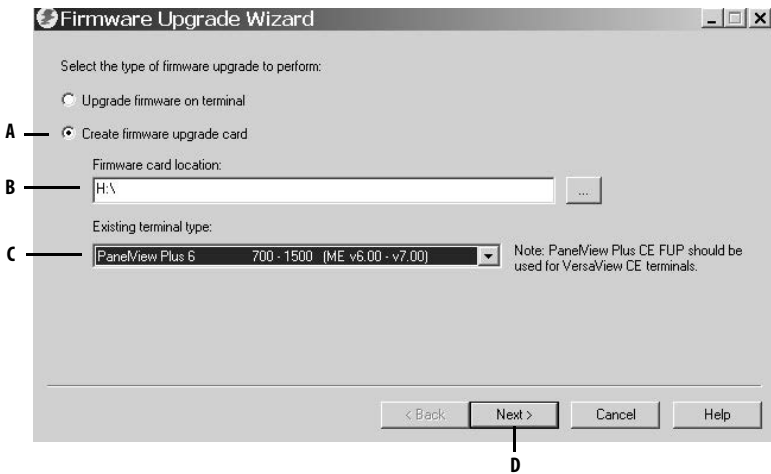
To copy firmware files to a USB flash drive, CF card, or SD card, follow these steps.

1. Insert either a USB flash drive, CF card, or an SD card into the appropriate slot on your computer.
2. Run the firmware upgrade Wizard:
 - a. In FactoryTalk View Studio software, from the Tools menu, choose firmware upgrade Wizard.
 - b. Choose Start>Programs>Rockwell Software>FactoryTalk View>Tools>ME firmware upgrade Wizard.

3. Follow these steps from the initial FUW dialog box.
 - a. Click Create firmware upgrade card (A).
 - b. Choose the location of the firmware card by browsing to the root directory of the storage card that is loaded in your computer (for example, H:\ or B).

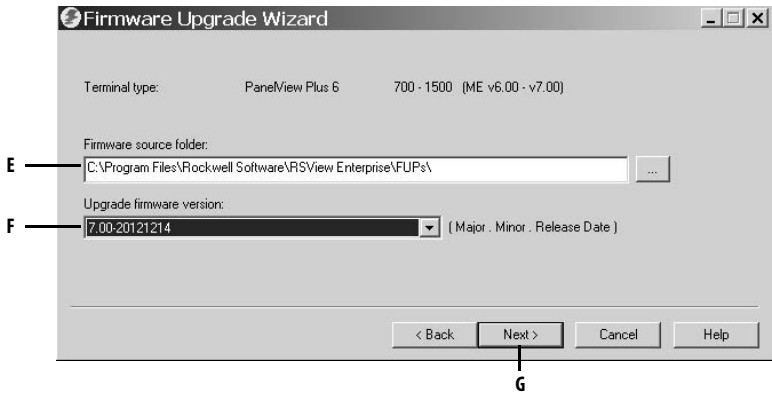
The firmware files are copied to this location. You can also specify a folder on the hard disk drive.
 - c. From the Existing terminal type pull-down menu, choose a version v6.00-v7.00 PanelView Plus 6 terminal.

The example shows that the firmware upgrade is for a 700 - 1500 PanelView Plus 6 terminal (C).
 - d. Click Next (D).



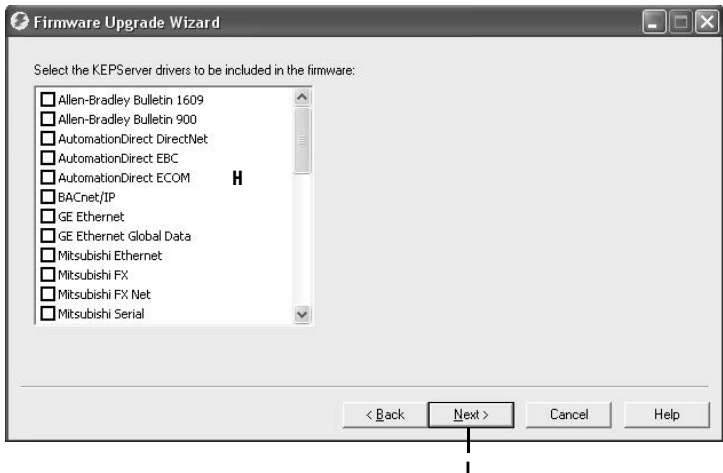
4. Follow these steps from this dialog box.
 - a. Browse to the location of the firmware source files on your computer, where the FUP was installed (E).
 - b. From the 'Upgrade firmware version' pull-down menu, choose the firmware revision for the upgrade (F).
 - c. Click Next (G).

It can take several seconds for the next dialog box to appear while the FUP is being retrieved.



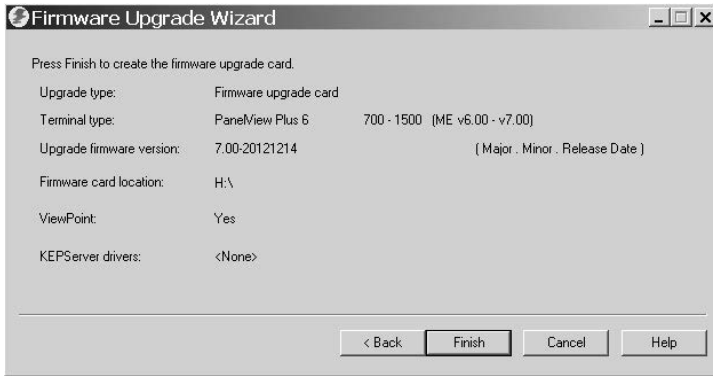
5. Follow these steps from this dialog box.
 - a. Choose the KEPServer drivers that you want included in the firmware (H).
 - b. Click Next (I).

Keeware drivers are already installed on the PanelView Plus 6 terminals.



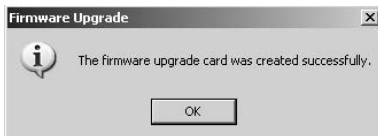
The final dialog box summarizes your choices for creating the firmware upgrade card.

- To upgrade the firmware in the terminal, click Finish.



A progress bar displays as files are copied to the USB flash drive, CF card, or SD card.

- Click OK when the firmware upgrade completes successfully.



TIP If the firmware files were copied to the hard disk drive, copy the files to the root directory of the USB flash drive, CF card, or SD card.

- Remove the USB flash drive, CF card, or SD card from your computer.
- To use this firmware upgrade card to upgrade the terminal firmware, proceed to the next section.

Upgrade Terminal Firmware by Using Firmware Upgrade Card

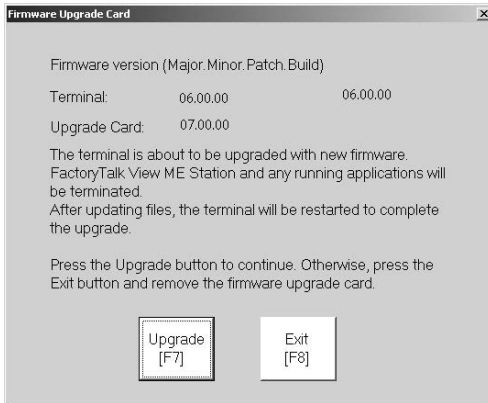
To transfer firmware files from the USB flash drive, CF card, or SD card to the terminal, follow these steps. This card is the firmware upgrade card that was created in the previous section.

-
- IMPORTANT**
- Do not remove or accidentally disconnect the USB flash drive, CF card, or SD card while a firmware upgrade is in process. This action can corrupt the firmware and make the terminal unstable.
 - Do not power off the terminal during a firmware upgrade.
 - USB hubs can produce unexpected behavior and are not recommended.
-

1. Insert the USB flash drive, CF card, or SD card into the appropriate slot on your terminal.

The firmware upgrade automatically starts and displays this dialog box.

2. To start the firmware upgrade, press Upgrade or [F7] on the terminal.



The terminal restarts and displays a progress bar during the upgrade.

When the upgrade is complete, the terminal restarts and executes the new firmware.

3. Remove the USB flash drive, CF card, or SD card from the terminal.

Upgrade Terminal Firmware over the Network

You can upgrade firmware in a terminal that is connected to a computer over a direct network connection. The network connection requires a computer that runs the FUW and RSLinx Enterprise software.

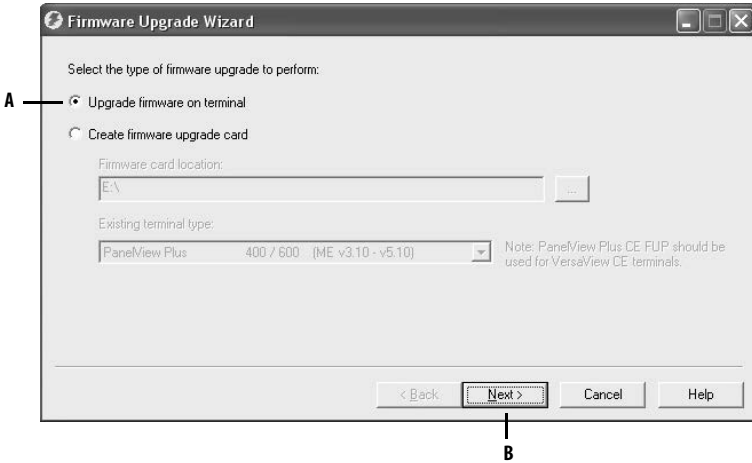
RSLinx Enterprise software is required so you can choose the terminal on the network.

IMPORTANT Use the latest version of RSLinx Enterprise software, which is available at https://rockwellautomation.custhelp.com/app/answers/detail/a_id/49190.

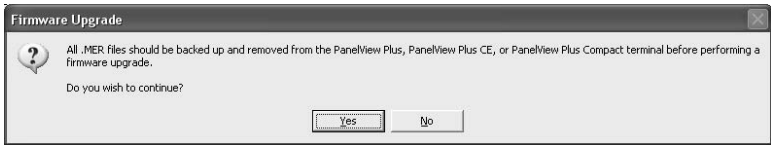
To copy firmware files to the terminal over a network by using RSLinx Enterprise software and Ethernet communication, follow these steps.

1. Run the FUW:
 - a. In FactoryTalk View Studio software, from the Tools menu, choose firmware upgrade Wizard.
 - b. Choose Start>Programs>Rockwell Software>FactoryTalk View>Tools>ME firmware upgrade Wizard.

- Click 'Upgrade firmware on terminal' (A) and click Next (B).



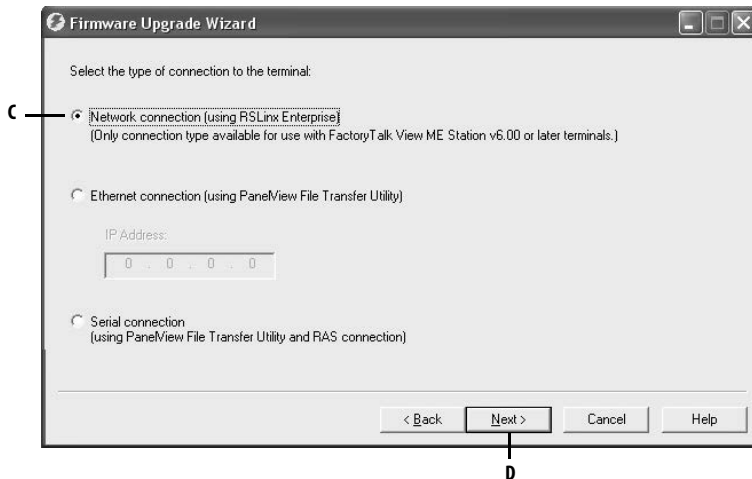
- To continue, click Yes.



It is not necessary to back up files on PanelView Plus 6 terminals.

- Click Network Connection (using RSLinx Enterprise) (C).

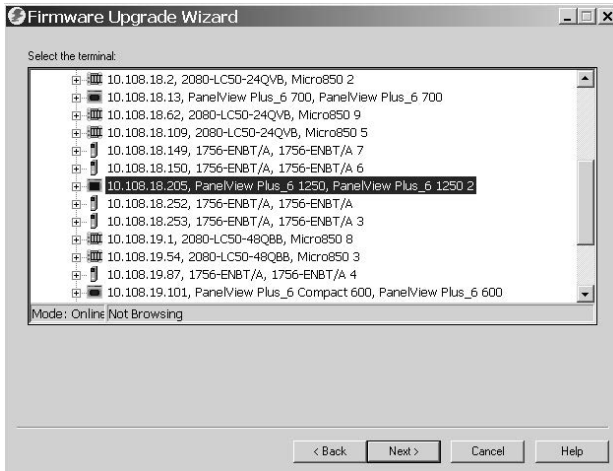
This selection is the only valid selection for PanelView Plus 6 terminals.



- Click Next (D).

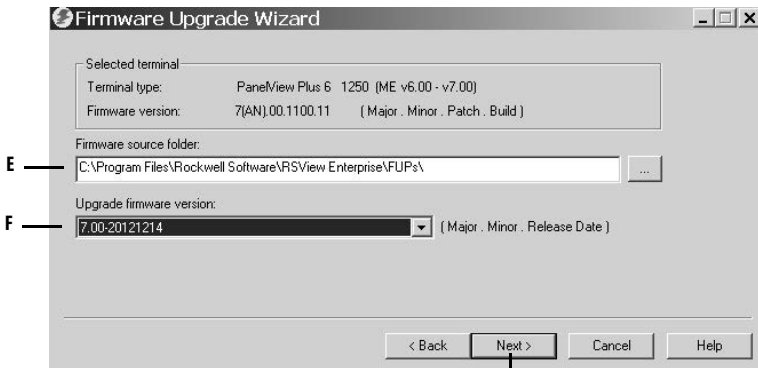
- To receive the firmware upgrade, navigate to and select the terminal.

IMPORTANT The highlighted selection in the figure is only for illustration purposes. Your model can be different.



- With the terminal selection highlighted, click Next.
- Follow these steps from this dialog box.
 - Browse to the location of the firmware source files on your computer, where the FUP was installed.
The default location is shown (E).
 - Choose the version of the upgrade firmware from the pull-down menu (F).
 - Click Next (G).

It can take a few seconds for the next dialog box to appear while the FUP is retrieved.



G

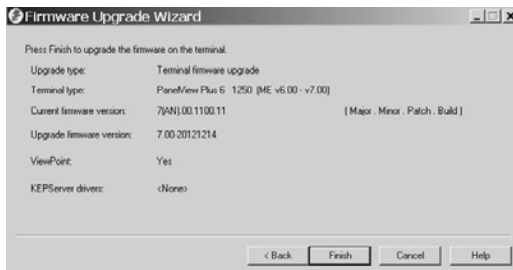
- From this dialog box, optionally choose the KEPServer drivers that you want included in the firmware, then click Next.

Keeware drivers are already installed on the PanelView Plus 6 terminals.

The final dialog box summarizes your choices for upgrading the terminal firmware.

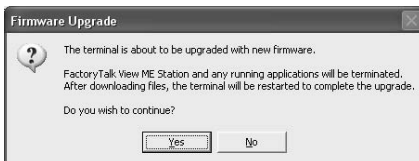


- To upgrade the firmware in the terminal, click Finish.



- To continue with the upgrade, click Yes.

A progress bar displays as firmware files are copied to the terminal.



- Click OK when the firmware upgrade is complete.



The terminal restarts and executes the new firmware.

Additional Resources

These documents contain additional information concerning related products from Rockwell Automation.

Resource	Description
PanelView Plus 6 HMI Terminals User Manual, publication 2711P-UM006	Provides information to install, configure, operate, and troubleshoot PanelView Plus 6 terminals.
PanelView Plus Terminals User Manual, publication 2711P-UM001	Provides information to install, configure, operate, and troubleshoot PanelView Plus terminals.
Industrial Automation Wiring and Grounding Guidelines, publication 1770-4.1	Provides general guidelines for installing a Rockwell Automation industrial system.
Product Certifications website, http://www.rockwellautomation.com/global/certification/overview.page	Provides declarations of conformity, certificates, and other certification details.

You can view or download publications at <http://www.rockwellautomation.com/global/literature-library/overview.page>. To order paper copies of technical documentation, contact your local Allen-Bradley distributor or Rockwell Automation sales representative.

Rockwell Automation Support

For technical support, visit <http://www.rockwellautomation.com/support/overview.page>.

Rockwell Automation maintains current product environmental information on its website at <http://www.rockwellautomation.com/rockwellautomation/about-us/sustainability-ethics/product-environmental-compliance.page>.

Allen-Bradley, FactoryTalk, PanelView, Rockwell Software, Rockwell Automation, and RSLink are trademarks of Rockwell Automation, Inc. Trademarks not belonging to Rockwell Automation are property of their respective companies.

Rockwell Otomasyon Ticaret A.Ş., Kar Plaza İş Merkezi E Blok Kat:6 34752 İçerenköy, İstanbul, Tel: +90 (216) 5698400

www.rockwellautomation.com

Power, Control and Information Solutions Headquarters

Americas: Rockwell Automation, 1201 South Second Street, Milwaukee, WI 53204-2496 USA, Tel: (1) 414.382.2000, Fax: (1) 414.382.4444
Europe/Middle East/Africa: Rockwell Automation NV, Pegasus Park, De Kleetlaan 12a, 1831 Diegem, Belgium, Tel: (32) 2 663 0600, Fax: (32) 2 663 0640
Asia Pacific: Rockwell Automation, Level 14, Core F, Cyberport 3, 100 Cyberport Road, Hong Kong, Tel: (852) 2887 4788, Fax: (852) 2508 1846



PN-343686

Publication 2711P-IN030B-EN-P - December 2015

Supersedes Publication 2711P-IN030A-EN-P - October 2013

Copyright © 2015 Rockwell Automation, Inc. All rights reserved. Printed in the U.S.A.